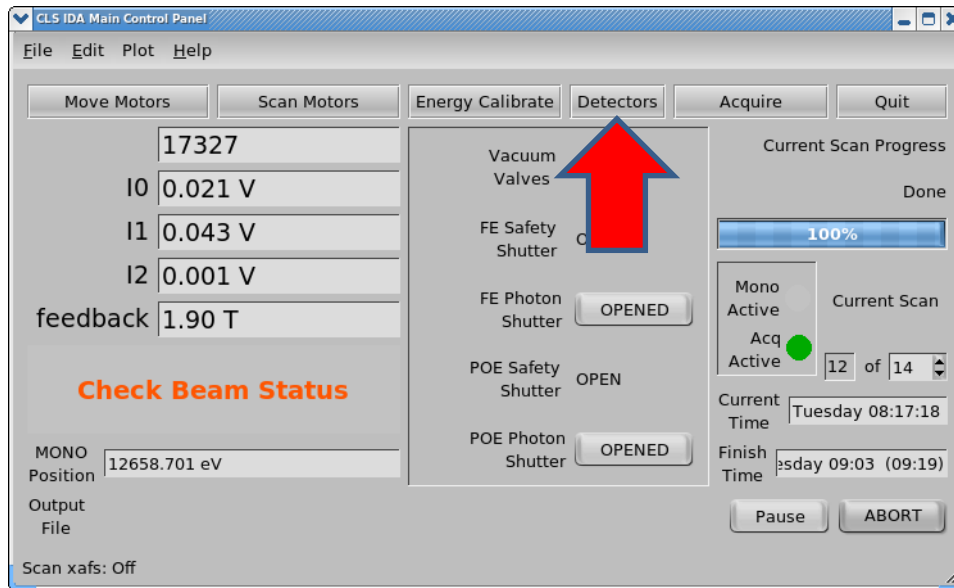


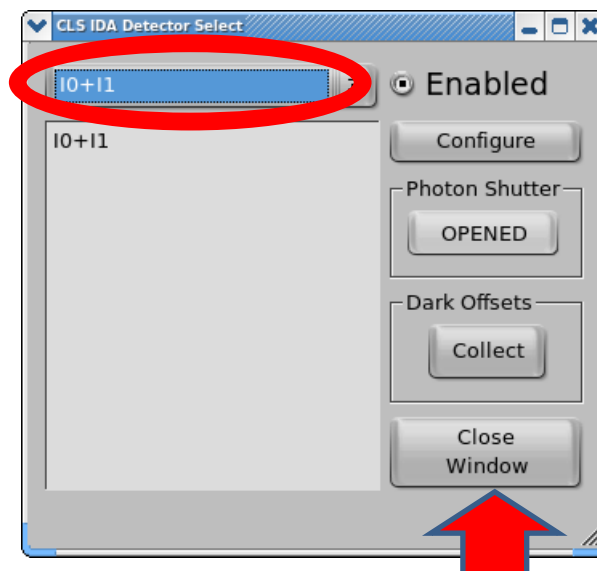
Transmission mode

- **Set up at IDA**

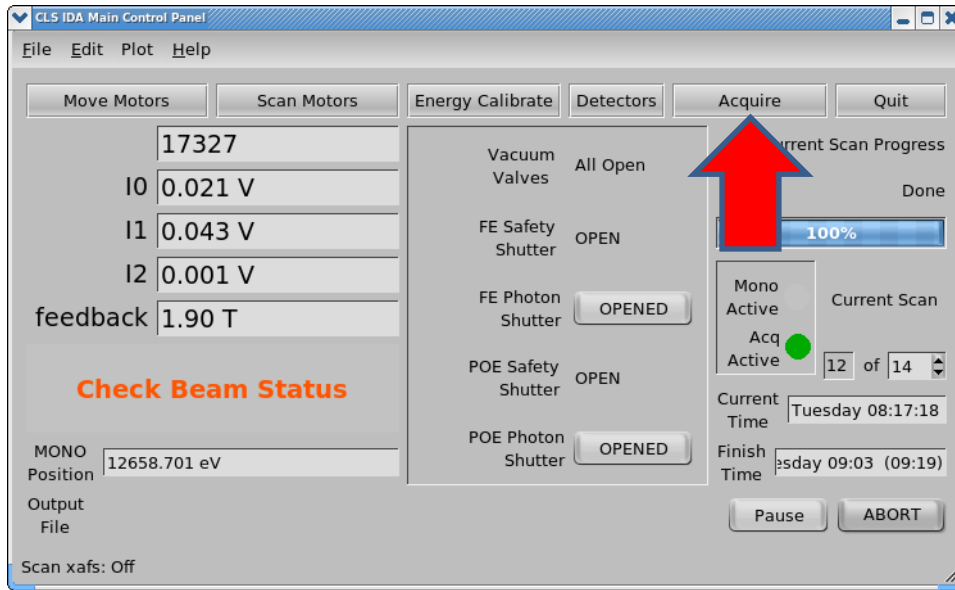
1. Click “Detectors” in IDA Panel



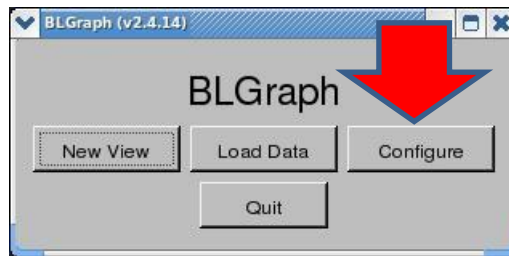
2. Verify only “I0+I1” enabled, it is by default. Close this window by click “Close Window”



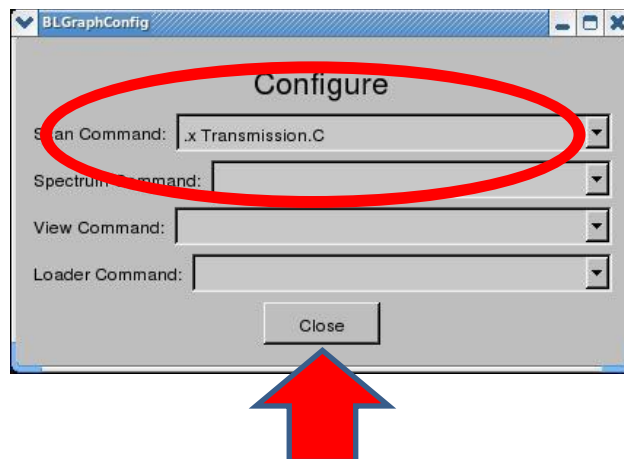
3. Click “Acquire” in IDA Panel



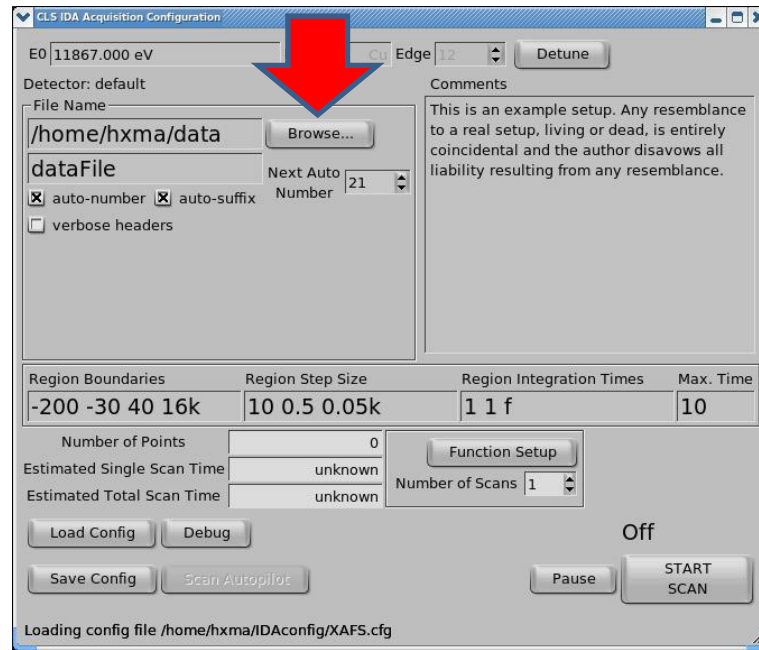
4. Two panel are brought out, “BLGraph” and “CLS IDA Acquisition Configuration”
Go to “BLGraph” and click “Configure”



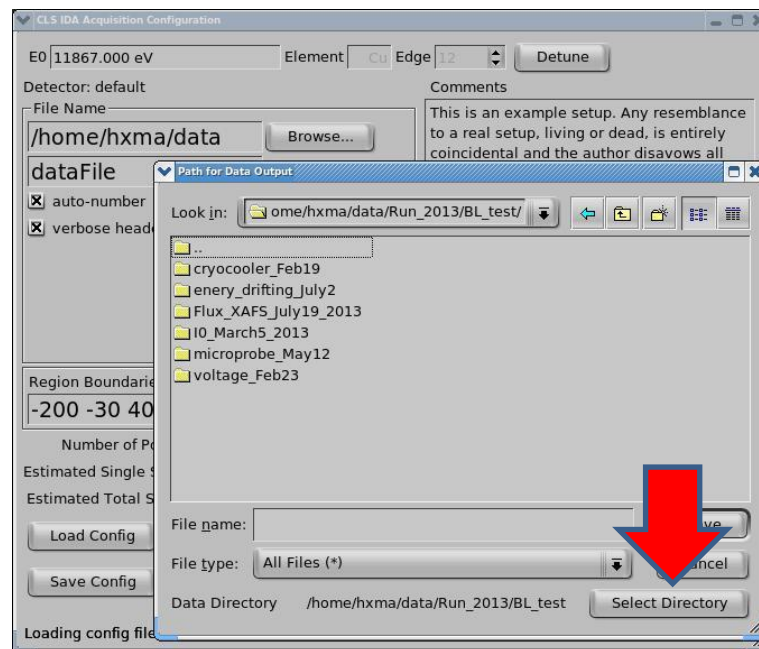
5. Selected “.x Transmission.C ” from Scan Command and click “Close” to close this window



6. Now go to “CLS IDA Acquisition Configuration” tab, Click “Browse” to save your data



7. Choose path under /hxma/data/Run2013/BL_TEST, and click “Select Directory”
You can create your own file folder under Run2013



8. Create your sample's name, and hit enter.

Select "verbose headers"; Set numbers of Scans; Set proper XAFS data collection configuration; and then Click "Start Scan".

(For a rough scan: -100 100; 2;)

